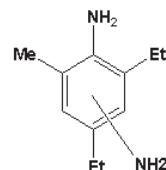


Description

ETHACURE 100 Plus curative is an effective curing agent for polyurethanes and epoxy resins. It may also be used as a chain extender for polyurethane and polyurea elastomers, particularly in reaction injection molding and spray applications.


Typical composition

3,5-diethyltoluene-2,6-diamine, %	75–81
3,5-diethyltoluene-2,4-diamine, %	18–20
Dialkylated m-phenylenediamines, %	0.5–3
Water, %	<0.08

Typical properties

Appearance	Clear, light colored liquid*
Molecular weight	178.28
Boiling point, °F (°C)	555 (308)
Density at 68°F (20°C), g/ml	1.022
lb/gal	8.50
Pour point, °F (°C)	15 (–9)
Flash point (TCC), °F (°C)	>275 (>135)
Viscosity at 68°F (20°C), cSt	280
Viscosity at 77°F (25°C), cSt	155
Solubility	
Ethanol	Miscible
Toluene	Miscible
Water	1.0
Equivalent weight with isocyanates	89.1
Equivalent weight with epoxy resins	44.6

*Darkens with time and exposure to air

Safety and handling information

Before handling or using this product, the material safety data sheet should be read and understood. This can be obtained from your Albemarle sales representative.

The information presented herein is believed to be accurate and reliable, but is presented without guarantee or responsibility on the part of Albemarle Corporation and its subsidiaries to ensure the accuracy or reliability of the information. It is the responsibility of the user to comply with all applicable laws and regulations and to provide for a safe workplace. The user should consider all information contained herein only as a guide, and should take precautions that the user considers necessary or prudent to promote a safe work environment, such as considering all applicable health and safety hazards, developing safe work practice procedures and properly instructing employees. Further, nothing contained herein shall be taken as an inducement or recommendation to manufacture or use any of the materials or processes mentioned herein in violation of existing or pending patents.